



INSTRUCTION BULLETIN

No. 9009246
Machine: See Below
Published: 06-2015
Rev. 00

NOTE: DO NOT DISCARD the Parts List from the Instruction Bulletin. Place the Parts List in the appropriate place in the machine manual for future reference. Retaining the Parts List will make it easier to reorder individual parts and will save the cost of ordering an entire kit.

NOTE: Numbers in parenthesis () are reference numbers for parts listed in Bill of Materials.

Installation instructions for **kit number 9009247**

SYNOPSIS:

This kit contains the parts needed to replace the pressure switch on M20, M30, S20, S30, 355, 385, 6500, 6550, 6600, 6650, 6400, 8200, 8210, 8400, and 8410 machines.
Please follow step-by-step instructions.

SPECIAL TOOLS / CONSIDERATIONS: NONE

(Estimated time to complete: 30 minutes)



PROTECT THE ENVIRONMENT

Please dispose of packaging materials, old machine components, and hazardous fluids in an environmentally safe manner according to local waste disposal regulations.



Always remember to recycle.

PREPARATION:

1. Park the machine on a clean level surface, turn off the machine, remove the key, and set the parking brake.

FOR SAFETY: Before leaving or servicing machine, stop on level surface, turn off machine, and remove key.

2. Disconnect the battery cables from the battery.

WARNING: Always disconnect battery cables from machine before working on electrical components.

3. Open covers / shrouds / panels necessary to access the pressure switch.

INSTALLATION:

NOTE: Refer to Fig.4 / Fig. 5 for the S30 pressure switch location, Fig. 6 for S20 pressure switch location, and Fig. 7 for the M20 / M30 pressure switch location. Refer to the Parts Manuals for pressure switch locations on out of production machines.

1. Remove parts / components necessary to access the pressure switch. Set all removed components and hardware aside.
2. Disconnect the main wire harness from the pressure switch.
3. Disconnect the vacuum hoses from the pressure switch. Note / mark where hoses were connected before disconnecting the hoses from the pressure switch.
4. Remove the pressure switch from the machine. Set all mounting hardware aside. Discard the pressure switch.
5. Loosen the screw securing the cover to the new pressure switch (1) and remove the cover from the new pressure switch. Set the cover / screw aside. (Fig. 1)



FIG. 1

6. Set the pressure switch to the appropriate setting for the machine. Refer to instructions included with the pressure switch for additional information. (Fig. 2 / Fig. 3)

Machine Model	Setting
S20	10 inch H2O
S30	15 inch H2O
M20	8 inch H2O
M30	8 inch H2O
6400E	6.5 inch H2O
355E	8 inch H2O
6550E	8 inch H2O
6400	8 inch H2O
8200	8 inch H2O
8210	8 inch H2O
355	11 inch H2O
385	11 inch H2O
6550	11 inch H2O
6600	11 inch H2O
6650	11 inch H2O
8400	11 inch H2O
8410	11 inch H2O
6500	11 inch H2O

FIG. 2

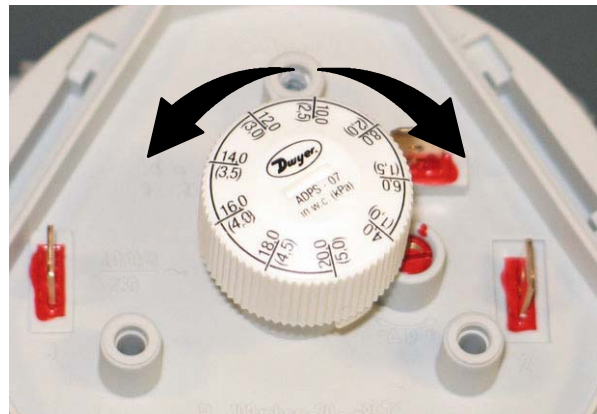


FIG. 3

7. Reinstall the cover onto the pressure switch (1).
8. Use saved hardware to install the new pressure switch (1) onto the machine.
9. Connect the vacuum hoses to the pressure switch.
10. Connect the main wire harness to the pressure switch (1).
11. Reinstall all components removed to install the pressure switch (1).
12. Start and test machine. Observe pressure switch hose connections for leaks. Close the hopper door, turn on the vacuum fan, and set the machine to the highest cleaning / sweeping speed. The clogged filter light should illuminate or there should be a clogged filter alert on the LCD. If there is no clogged filter alert, inspect the hoses / connections to the pressure switch for leaks.

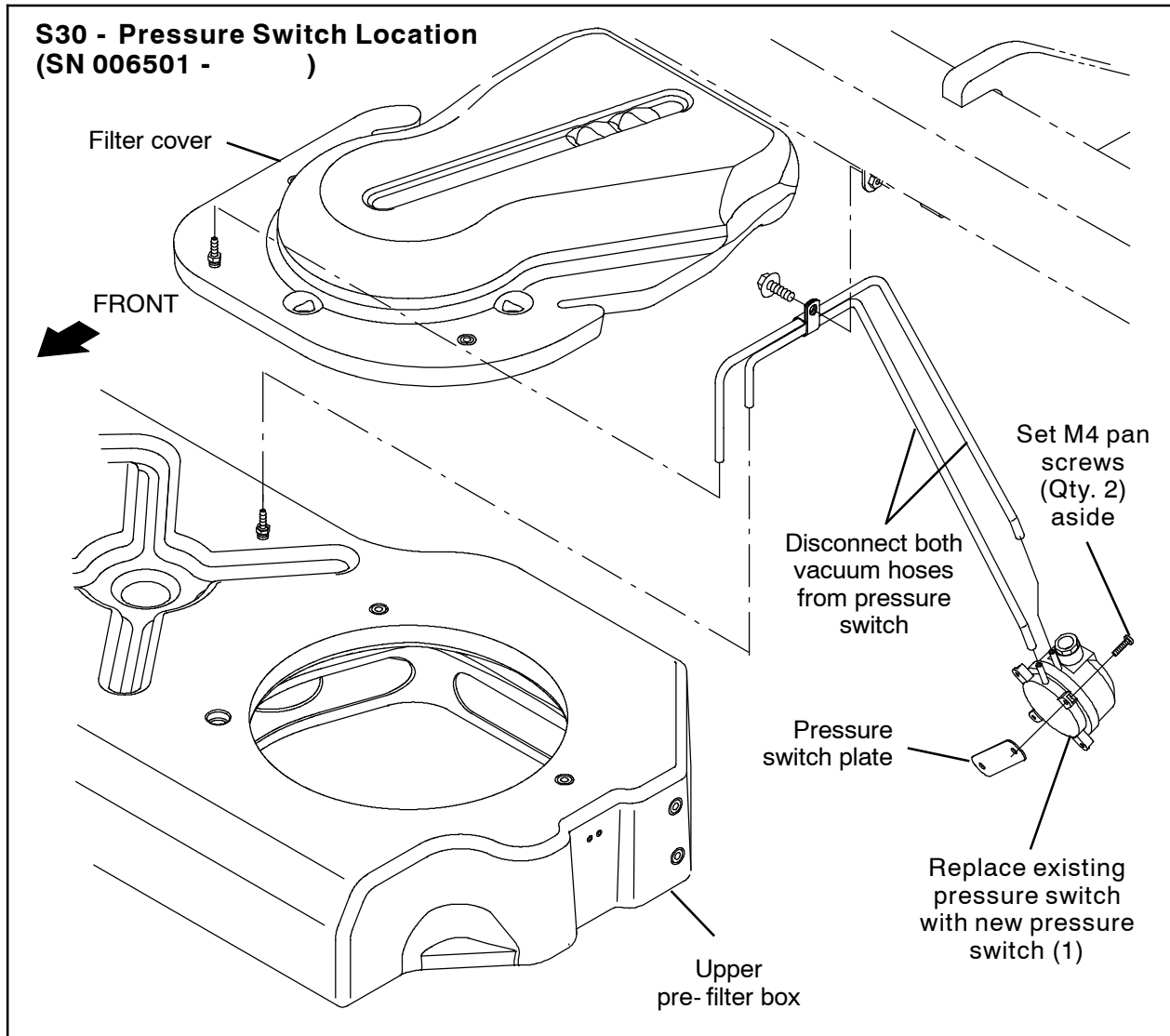


FIG. 4

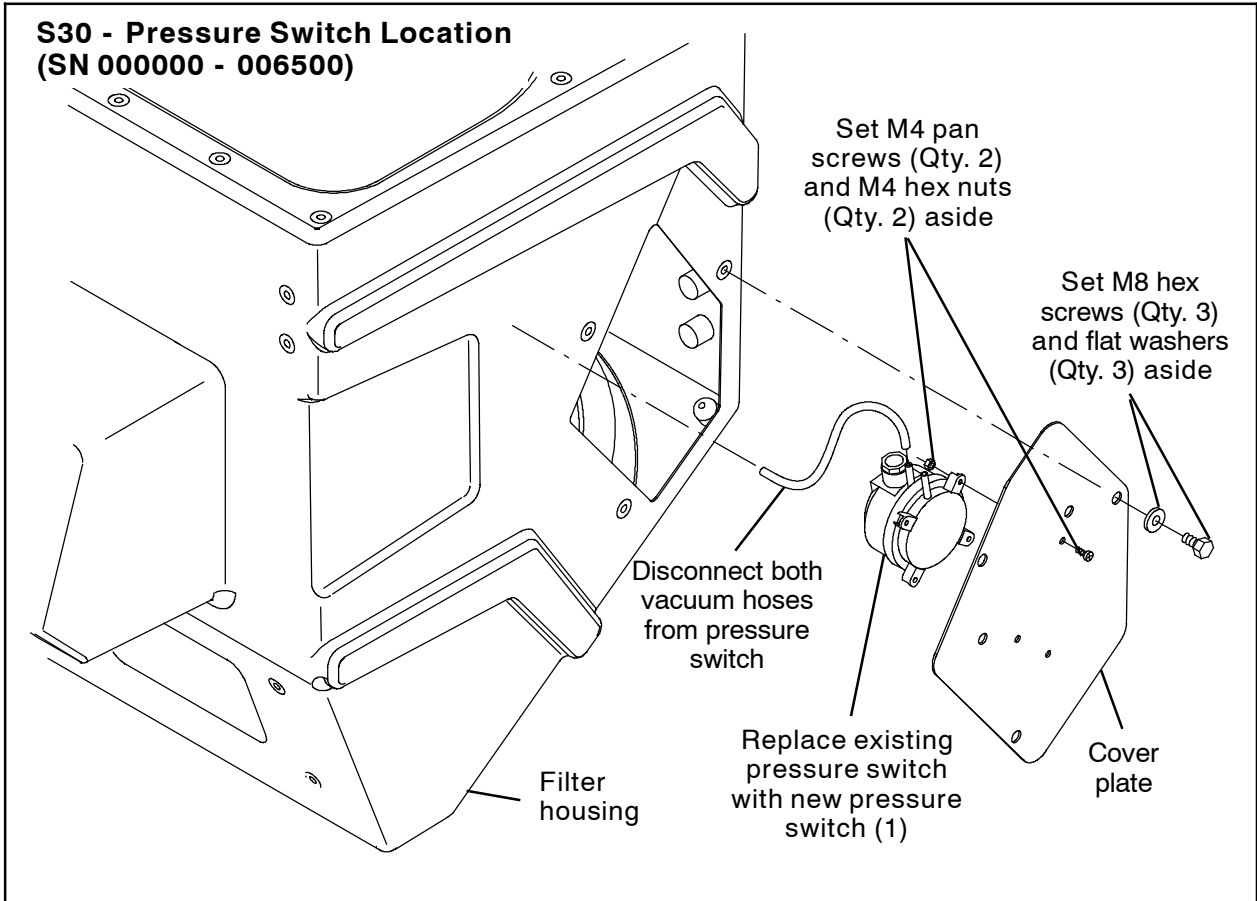


FIG. 5

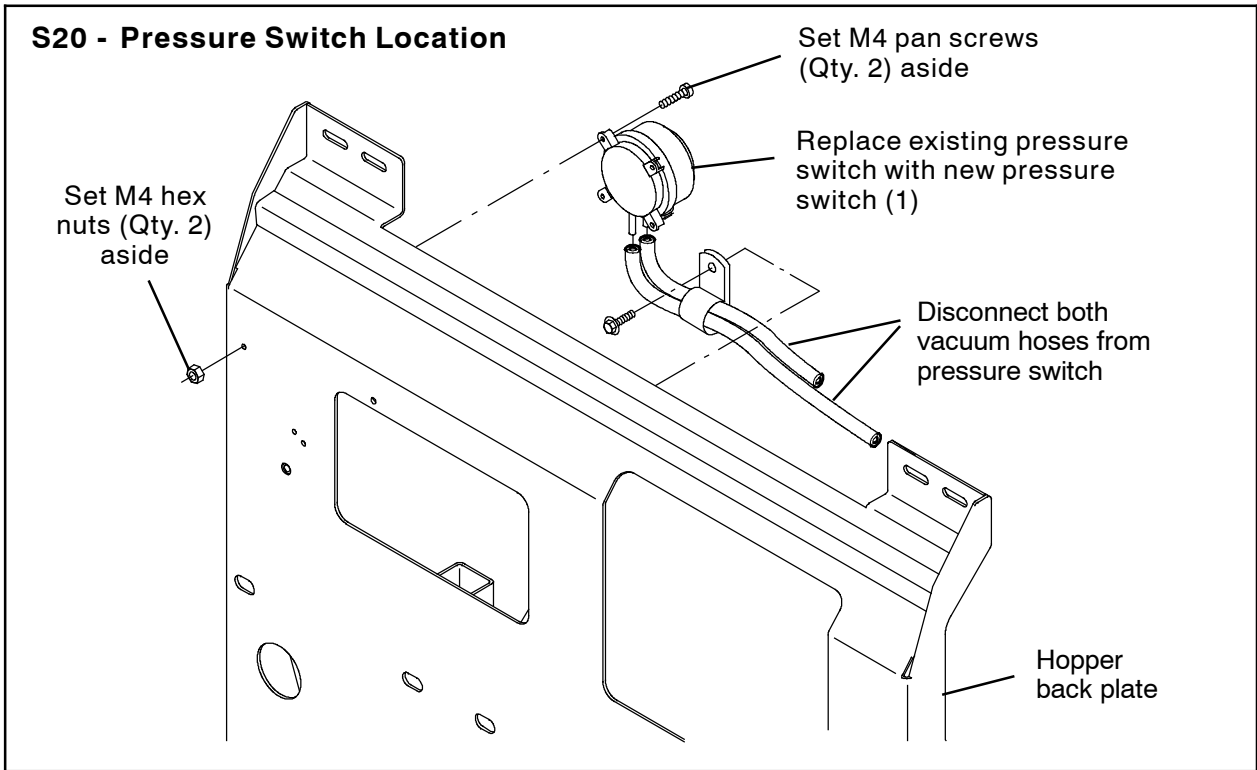


FIG. 6

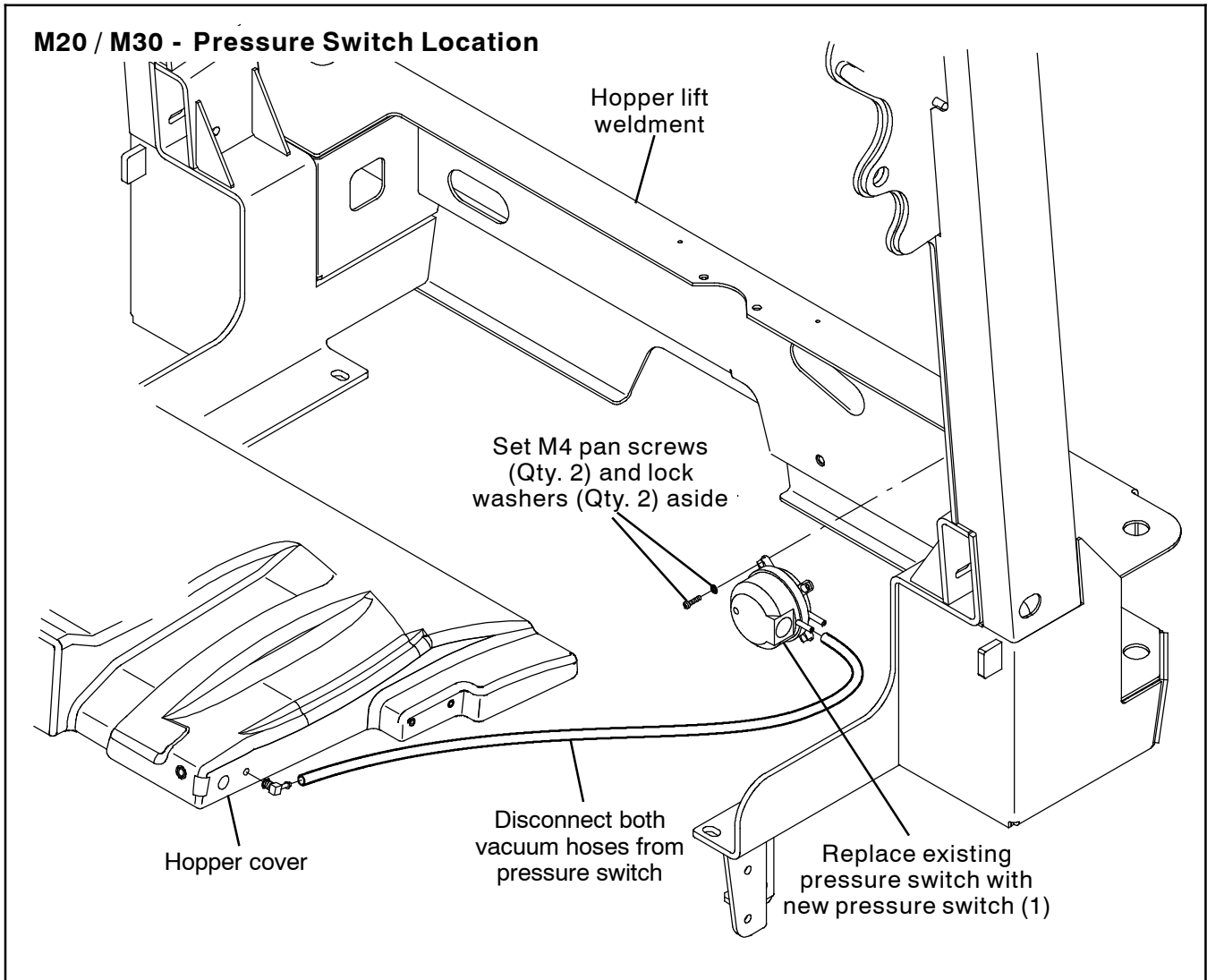


FIG. 7

Bill Of Materials For Switch Kit, Press, Replmt [S30]- 9009247

Ref.	Tennant Part No.	Description	Qty.
▽	9009247	Switch Kit, Press, Replmt [S30]	1
▲ 1	1052885	Switch, Press, Adj [4- 16 In Wtr]	1

TENNANT COMPANY
P. O. Box 1452
Minneapolis, MN 55440-1452